

# FINE ARTS

## 2026 COMPETITION GUIDE

**It's your moment to shine!**  
**Enter today.**

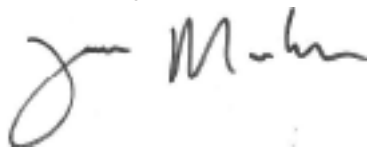
For more than 170 years the California State Fair has been a constant showcase of the talents and achievements of the people of California. Entering into the California State Fair's 2026 Competitive Exhibits Program allows you the opportunity to showcase your abilities, and revel in your accomplishments!

The California State Fair's friendly competitions are designed to acknowledge the best of the Golden State. Our Competitive Programs inspire talented Californians, as well as highlight the latest advances in technology, agriculture, and industry.

More than 750,000 visitors are expected at the State Fair this summer. Your work is an integral part of the State's celebration, and we look forward to seeing your talents on display during the annual State Fair from July 17-August 2.

We encourage you to enter today and begin making lasting memories for yourself, and for the hundreds of thousands of State Fair patrons!

Sincerely,



Tom Martinez  
Chief Executive Officer

### GOVERNOR

GAVIN NEWSOM

### CALIFORNIA STATE FAIR BOARD OF DIRECTORS

Chair, Nick Hardeman, Sacramento  
Vice Chair, Arturo Barajas, Sacramento  
Willie Adams, San Francisco  
Heather Bernikoff, Catheys Valley  
Rina V. Dimare, Clarksburg  
Willie Pelote, Sacramento  
Che Salinas, Sacramento  
Kim Craig, Sacramento

### EX-OFFICIO MEMBERS

SENATOR ANGELIQUE ASHBY  
SENATOR MELISSA HURTADO  
ASSEMBLY MEMBER MAGGY KRELL  
ASSEMBLY MEMBER ESMERALDA SORIA

### CHIEF EXECUTIVE OFFICER

TOM MARTINEZ

### PROGRAMS DIRECTOR

JAIME RAMIREZ

# OFFICE OF THE GOVERNOR

## **California Agriculture Fair Season**



It is my pleasure to welcome you to the 2025 California fair season!

From the first fair of the season in February to the last in late October, fairgrounds across the state are busy planning for one of the largest events of the year. These annual fair events have so much to offer.

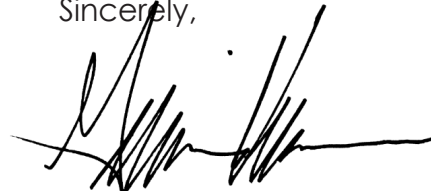
At the fair, you can expect to find the traditional corn dogs, cotton candy, and carnival rides. In addition to these delicious treats and fun entertainment, you can also enjoy competitions, exhibitions, and educational activities. Your participation as exhibitors helps promote the importance of agriculture and food production throughout our state.

Aside from the annual fair, California fairgrounds remain busy hosting a variety of other events throughout the year. Most of these events are fun and festive celebrations that represent the culture and diversity of the communities that surround the fairgrounds. However, our fairgrounds are also amongst the first to serve in times of despair during emergencies and evacuations.

As resiliency centers, our fairgrounds provide safe shelter and build community preparedness as hazards like wildfires, floods and extreme heat become longer lasting and more frequent in California. During disasters, the fairgrounds offer a place to stay with kitchen and sanitation facilities, showers, and other resources.

Our fairgrounds are so important for our communities and so are exhibitors and advocates like you! Thank you for your many contributions to the continued success of the fairgrounds.

Sincerely,



GAVIN NEWSOM



CALIFORNIA DEPARTMENT OF  
FOOD & AGRICULTURE

Karen Ross, Secretary

January 8, 2025

On behalf of the California Department of Food and Agriculture, a warm welcome to you as we all prepare for the exciting 2025 fair season! We are thrilled you are joining us this year and sincerely thank you for your continued involvement in showcasing your products, livestock, and expertise. Your contributions help make our fairs successful and provide an invaluable experience for our communities.

Fairs play an essential role in connecting food and agriculture with the public. They are not only a time for us to celebrate the fruits of our labor, but also serve as a critical platform for educating future generations about the importance of farming and food production, livestock management, and sustainable practices. Through your participation, you directly contribute to the appreciation of the vital role agriculture plays in our lives and foster an understanding of the tremendous diversity, innovation and new technology that create new opportunities in agriculture and our rural communities.

The fairgrounds are not just a venue for the annual events. Throughout the year, they serve as a hub for various interim activities that support local economies, offer educational programming, and foster community engagement. From hosting agricultural workshops and livestock sales to providing facilities for regional competitions and cultural festivals, the fairgrounds contribute to the vibrancy and resilience of our agricultural community. Additionally, they play an important role in emergency preparedness, providing a space for disaster response and recovery efforts during critical situations, such as flooding or extreme weather events.

We understand the dedication and hard work that goes into preparing for the fair, and we want to express our deep gratitude for your commitment to making each fair season a success. Your participation ensures the continued relevance of our fairs and strengthens the agricultural ties that bind us all together as a community.

We look forward to this fair season and its great success!

Yours truly,

Karen Ross  
Secretary



# TABLE OF CONTENTS

<b>Important Information to Know</b> .....	<b>6</b>
Contact .....	6
Entry Dates.....	6
Why Enter the Competition? .....	7
<b>Competition Overview</b> .....	<b>8</b>
Who Can Enter & Entry Fee .....	8
Entry Deadline .....	8
How to Enter.....	8
Requirements for Digital Images.....	9
Eligibility.....	9
Photographing Your Entry .....	11
<b>Rules &amp; Requirements</b> .....	<b>12</b>
Requirements .....	12
Rules for Accepted Entries.....	12
Display Requirements: Two-Dimensional Artworks .....	14
Three-dimensional artworks designed to hang .....	14
Three-dimensional artworks designed to be free-standing .....	14
Disclaimers .....	15
Art Sales Information .....	16
<b>Delivery, Shipping, &amp; Pick-up</b> .....	<b>17</b>
Hand Delivery & Pick-up .....	17
Shipped Entries .....	18
<b>Judging</b> .....	<b>20</b>
First Round.....	20
Second Round .....	20
Jury .....	21
<b>Awards</b> .....	<b>22</b>
Donor Awards .....	23
Sponsors.....	23
<b>Divisions &amp; Classes</b> .....	<b>24</b>
Division 400 - 2D Artworks/Brushworks.....	24
Division 405 - 2D Artworks/NonPainting.....	24
Division 410 - 3D Artworks.....	24
Division 415 - Digital Artwork.....	25
Division 416 - Porcelain Painting .....	25
Division 420 - Skateboard Artwork .....	25
<b>Plein Air</b> .....	<b>27</b>
Division 460 - Special Contest: Plein Air .....	27

Rules ..... 27  
Judging..... 29  
To Enter the Special Contest..... 29  
**2026 General Rules..... 30**  
Please visit the following link for rules online:  
<https://castatefair.com/wp-content/uploads/2025/11/2026-General-Rules.pdf>

\*This book is still being updated as more details are being finalized. Please keep checking back for the most up to date information. Thank you!

# IMPORTANT INFORMATION TO KNOW

**Contact:** Katie Kiseyova  
*Fine Art Coordinator*  
*Phone: (916) 607-4273 & E-mail: [fineart@calexpo.com](mailto:fineart@calexpo.com)*

## Entry Dates:

FINE ART	
January 22	Entries Open registration online
May 8	Entries Close online 4:30 PM & entry fees must be paid & images uploaded
May 15	Accepted artwork announcement
May 29	Shipped artworks & shipping form, due 4:30 PM
May 29 - May 30	Hand deliver accepted artworks with attached entry tag, Expo Center Building #7, 9AM - 5PM
June 26	Artist's statements & Artist's Resume due by email
July 17	Exhibition Opens. Award results posted online.
July 26	Awards ceremony in Expo Center Building #7
August 2	Exhibition Closes
August 7 - 8	Pick up artworks & awards, Expo Center Building #7, 9AM - 5PM
August 14	Shipped artworks packed and mailed out by this date
PLEIN AIR	
January 22	Entries Open Registration online
July 10	Plein Air Entry Close online at 11:59 PM & entry fees must be paid
July 18 - 19	Painting is done around the fair grounds
July 19	Completed paintings submitted to Building #7 by 4 PM
July 19	Judging & Awards Ceremony 6:00 PM
July 19 or August 8	Plein Air Artwork pick up

## The California State Fair July 17-August 2, 2026

The California State Fair has always been the awe-inspiring showcase of the state's finest, and ever since the first fair in 1854, California has upheld this tradition. People come from all over to witness the competitions and innovations that our exhibitors produce. We continue to add new and exciting competitions to our competitive programs to showcase California's very best!

### Why enter the competition?

The Fine Art competition has attracted many artists in the visual arts for more than 160 years. Exhibiting at the California State Fair is a great way to build exhibition credits on your resume, with the added opportunity to sell your work. Exhibiting at the State Fair also exposes your artwork to a large and diverse audience. Entering is a great way to gain experience in submitting artwork to galleries and national and international shows.



# COMPETITION OVERVIEW



**The California Fine Art Competition and exhibition is recognized as one of the Golden State's largest and most prestigious juried art shows.**

You are invited to enter the California State Fair's juried fine art competition for California artists 18 years of age or older. We wish you success in this competition and hope you will join us for sharing the best moments of summer at the 2026 California State Fair on July 17 - August 2.

## Who Can Enter & Entry Fee

**California residents who have reached 18 years of age as of January 1, 2026.**

**\$20.00 per artwork**

**\$10.00 (Plein Air) per artwork**

Online entries must be paid by Visa or Mastercard.

**Entry fees are non-refundable.**

## Entry Deadline

All entries must be registered online, with an image of your entry uploaded, and all entry fees paid at [CAStateFair.com/fine-art/](https://caStateFair.com/fine-art/) by 4:30 pm, May 8, 2026. Late entries will not be accepted.

## How to Enter

1. Review all information in this guide, taking note of entry deadlines, delivery dates and directions, entry requirements and rules, department name, entry divisions and classes you will enter.
2. Visit <https://caexpos.fairwire.com/>.
3. Email will be the primary form of communication, please ensure you are using an email you check regularly.

4. You must pay your entry fees before uploading images.
5. Do not upload images using a cell phone.
6. Place all images to be uploaded in the same folder on your computer, so they are easily found.
7. Remember the names of the files to ensure you are uploading the correct image for each entry.
8. Internet browser must be up to date. Check the browser to make sure Flash add-on is enabled.

**Attention Mac Users:** Please use Internet Explorer, Chrome, or Mozilla Firefox when entering and uploading.

## Requirements for Digital Images

1. Acceptable file formats are: .jpg (jpeg), .gif, .bmp, .png, .pdf or .tiff
2. Save images in RBG ONLY.
3. Maximum file size: 7MB.
4. Do not upload signed or watermarked images.
5. Two-dimensional entries are allowed only one image upload. Three dimensional entries are allowed three image uploads.
6. Diptychs and Triptychs are allowed only one image upload. Upload one image of the entire artwork. Put the word “diptych” or “triptych” or “set” in the description section of information.

## Eligibility

1. Artists entering the competition must be residents of the State of California, who have reached 18 years of age as of January 1, 2026.
2. Entries must be original artworks created by the artist entering the competition and **cannot** include any element created or significantly altered using Artificial Intelligence (AI). Artwork must have been completed within the past **two years**. The year the artwork was completed must be included as part of the online entry process.
3. An artist may enter an unlimited amount of artworks. Each artwork not identified as part of a diptych, triptych or set is considered an entry and must be accompanied by the entry fee. There is no limit on the number of entered artworks per artist that may be selected by the jurors for the exhibition.

4. Artworks previously accepted into any California State Fair competitive program may not be re-entered. Same or identical items cannot be entered and/or exhibited in more than one California State Fair competitive program or in more than one competitive Division or Class (ex. You may NOT enter the same or identical piece of artwork in both CA Crafts and Fine Art but you MAY enter a different piece in each).
5. Tutored works, class exercises, maquettes or other models of artworks, and reproductions, including Giclee or other prints of artworks, are ineligible and will not be accepted into the show.
6. This is an “open” juried show. Entries are not required to have won a previous competition (County Fair or other juried show).



# Photographing Your Entry for the CALIFORNIA State Fair

## Fill the Frame

Get as close to your artwork as possible. Make sure only your artwork fills the entire frame.



## DO NOT Include Background Items

For 3-D items, use draped fabric for a neutral background. Include frame only if considered part of the artwork.



## Shoot Straight

Stand your art up straight and take your photo at the same level as your artwork.



## Use Natural Light

Outdoor light gives the best results. A flash may reflect off of smooth surfaces or make your image look flat.



## Focus

Make sure your photo is in focus.



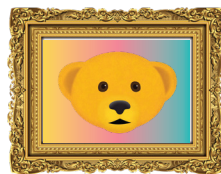
## 3-D Entries

Photograph 3-D entries from 3 different angles to show every detail.



## Photographs & Graphic Arts

Convert the original image file to a 6MB .jpeg, .gif, .bmp, .png, .pdf or .tiff file.



## Square It Up!

Objects look rounded when photographed too close. Back up, retake the shot, & crop image.



## OTHER TIPS

Digital images must be an accurate representation of the artwork. Misrepresented entries will be disqualified and not exhibited.

If the artwork is already framed, take it out of the frame if possible to photograph it.

Do not caption or "watermark" the digital image.

Photo maximum file size: 7MB If the file size is larger, use a photo editing program to resize file. Free programs available: Microsoft Image Resizer, Microsoft Photo Editor, Picasa, Infranview, Photoscape, and others.

Save images in RGB only.

# RULES & REQUIREMENTS

## Requirements

1. Specific requirements listed under Divisions and Classes on pages 24-26.
2. It is the responsibility of the artist to submit documentation as required. Do not send photo prints of artwork, exhibit history of artwork, artist's resume, artist's brochure, or artist's statement when entering. Materials other than those required will not be seen by the jurors. If/when the artwork is accepted into the exhibition, artists will be asked to submit a brief artist's statement and a resume.
3. Two-Dimensional (2-D) artwork may not exceed nine (9) feet by nine (9) feet, including frame. Three-Dimensional (3-D) artwork may not exceed forty (40) square feet of total floor space and a height of fifteen (15) feet. Due to safety concerns, artworks designed to hang from the ceiling may not exceed a total weight of five (5) pounds.
4. Due to facility limitations, certain art forms may not be suitable for entry (i.e., performance art or works that cannot be displayed without endangering the public). Artists are advised to contact the Fine Art Coordinator if they have concerns regarding the eligibility of their artworks in any division.

## Rules for Accepted Entries

1. All accepted artwork must have the following information on or attached to the artwork: Artist's Name and Phone Number, Division and Class Entered, and the Title of the Artwork. Artists are required to bring a physical copy of any corresponding entry tags, which will have been sent to the email associated with your registration, for artwork that is dropped off.
2. Artworks may not be altered in any way after they are accepted into the show. Artwork must be the same size as the size stated on entry.
3. Accepted artwork should be ready to display and delivered according to the hand-delivery or shipping dates and times listed in the Entry Dates.
4. Once delivered, artworks may not be removed from the exhibit by the artist (or purchaser) until the pickup date listed in the Entry Dates.
5. The California State Fair assumes total design control over the presentation of the California Fine Art exhibit. An artist may suggest how to display their artwork, but no changes will be made after the exhibit is installed.

6. Artwork that is inappropriate for general audiences will not be accepted.
7. Certain entries (i.e., electronic or kinetic) which may require routine maintenance and/or adjustments during the exhibition may only be maintained during specified hours. Contact the Fine Art Coordinator for more information.
8. Accepted entries with special or complex installation needs must be accompanied by detailed installation procedures and diagrams. In certain cases, we may ask the artist to be present for installation.
9. The California State Fair reserves the right to photographically and electronically document any artwork accepted in the exhibition for use in catalogs, publications, publicity materials or for purposes deemed helpful to California State Fair promotion.
10. Exhibitors will be asked to write a statement of 125 words or less about their accepted artwork(s). These artist's statements are to be submitted as a word document, using Arial 12pt font. All submission must be in a Microsoft Word document. The statements will be displayed in a binder located at the Art Docent Information Desk. Statements may be edited for length or continuity. Exhibitors will also be asked to submit a one-page Artist's Resume. Artist's Resumes will be made available to the public during the exhibition and exhibitors are reminded to not include private or confidential information in this document. Artist's Statement and Resume must be emailed per instructions sent to exhibitors. Artist's Statements and Resumes are due by June 26, 2026. Submission of these documents is optional, but artists are encouraged to provide them.
11. All artists whose artwork is exhibited will be invited to the awards ceremony **(July 26, 2026 at 10:30am)**. Golden Bear, plaques, and ribbons as described on page 22 will be presented at this event. If the artist is not present, any award won may be picked up along with the artwork, or if the item is not picked up, we will mail the award to the artist. Checks for award premiums will be mailed separately after the fair. **In order to receive your check, be sure your mailing address is correct at the time of entry.**

## Display Requirements: Two-Dimensional Artworks

All two-dimensional works in all divisions must be framed and/or ready to hang with heavy picture wire. Saw-tooth hangers, uniframes, and frames with



a sharp glass edge will not be accepted.

1. Wet paintings will not be displayed.
2. California Fine Art will not furnish or protect any artworks with glass, plastic, or hanging apparatus. If appropriate for the medium used, framing may include glass; however, if shipping this artwork, glass must be replaced with Plexiglas or another acrylic sheet product.
3. Unless printed on gallery-wrap canvas or metal, photographs in Division 415 - Digital Artwork must be framed.

## Three-dimensional artworks designed to hang

1. Cannot exceed 5 lbs total weight and must be equipped with heavy duty hanging wire or in a manner appropriate for the particular artwork.
2. Wall hanging fiber and textile entries must be equipped for hanging by securely attaching a four (4) inch wide sleeve across the entire top back edge of the artwork for display purposes. For display uniformity, California Fine Art will provide dowels for hanging all textile pieces.

## Three-dimensional artworks designed to be free-standing

1. Must be based, when necessary, for structural support and proper presentation.
2. For display uniformity, California Fine Art will furnish pedestals for small free-standing three-dimensional works. If a base or pedestal is an integral

part of the artwork, please contact the Fine Art Coordinator for requirements.

3. With few exceptions, California Fine Art will not provide glass, plastic cases, or other apparatus to protect the artwork. In the case of fragile artworks, California Fine Art may ask the artist to provide such protection for secure display.

**The method of display and the placement of exhibited artworks is per the expertise and discretion of the California State Fair staff.**

## **Disclaimers**

1. Although care and diligence will be exercised in the course of receiving and handling entries, the California State Fair is not responsible for any technical malfunctions, failures, omission, interruption, or defect of any entries. Nor are they responsible for entries that are not received in accordance with deadline rules due to a computer or electronic malfunction or other reason.
2. **Insurance is the responsibility of the exhibitor.** Although staff and volunteers monitor the exhibit for the majority of each fair day, the California State Fair does not insure exhibits and is not responsible for any loss, damage, or theft of entries.
3. Photographs are taken in the California Fine Art Building during the Fair. These photographs are used for publicity purposes and archives. By submitting an entry, exhibitors are giving the California State Fair permission to use such photographs at their discretion without compensation to, or prior approval from, the artist.
4. When entering online, the competitor acknowledges that they have read and understood these rules and the 2026 General Rules. Failure to follow rules and requirements may result in disqualification without the return of entry fee(s).
5. Entry fees are **non-refundable** regardless of acceptance into the show.

## Art Sales Information

Artists will have the option of placing their artwork for sale. When setting the price of their artwork, artists are advised to take into consideration the commission, the cost of framing and/or otherwise preparing their artwork for display, as well as the cost of delivery of their artwork. A **commission of 30%** of the purchase price on each artwork sold will be retained. Sales tax will be charged to these sales, the fair will not ship artwork to buyers, and purchased artwork must be picked up by the buyer. A portion of the commission will be donated to the **Friends of the California State Fair Scholarship Fund**.

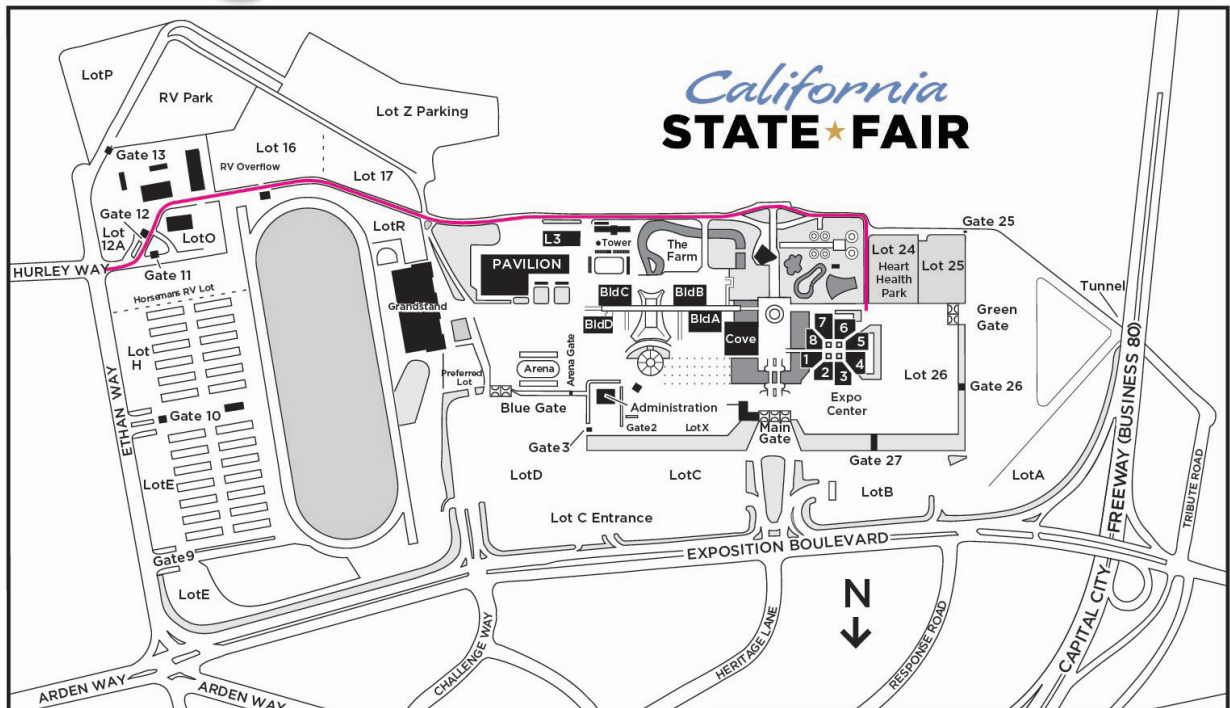
For more information on the **Friends of the California State Fair Scholarship Fund** or to sign up to become a **Freinds of Fair Volunteer**, please visit [CAStateFair.com/Friends-of-the-California-State-Fair](http://CAStateFair.com/Friends-of-the-California-State-Fair).



# DELIVERY, SHIPPING, & PICK UP

## Hand Delivery & Pick-up:

1. Hand delivered, accepted artworks may be delivered to Cal Expo Fairgrounds, **Expo Center, Building 7** (see map) only between the hours of **9:00 a.m.** and **5:00 p.m.** on either **Friday, May 29 or Saturday, May 30, 2026.** For directions to the Expo Center Buildings and the California Fine Art & Photography Exhibit Hall, see below:



### Directions:

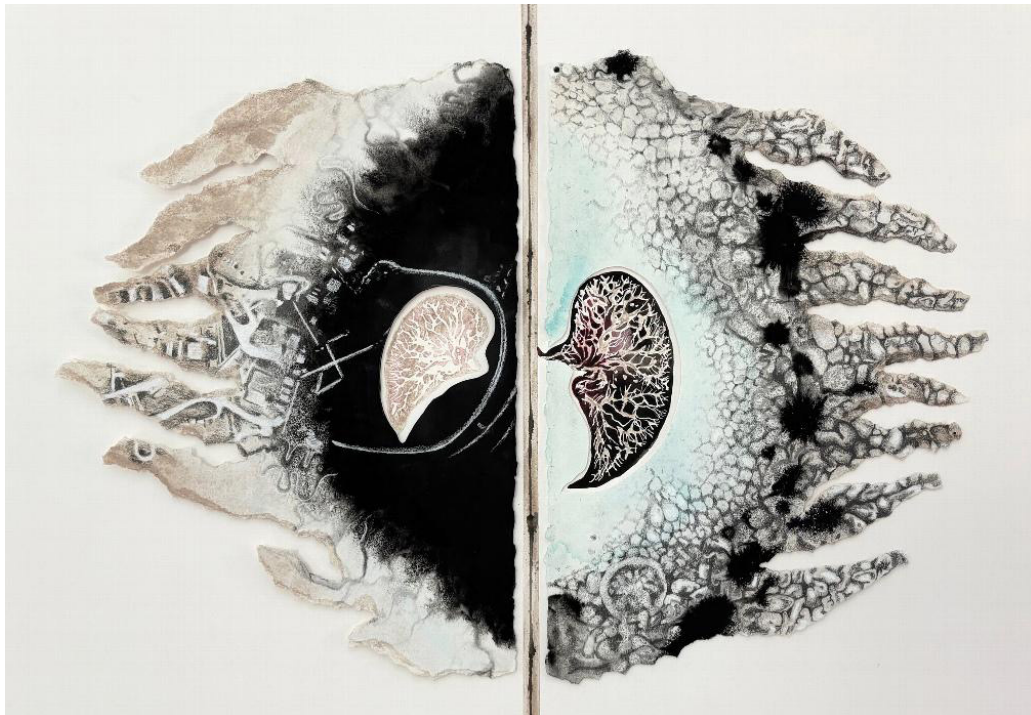
- Enter California State Fairgrounds via **Gate 12 at the intersection of Ethan & Hurley Way.**
- Follow the access road past the Water Park, and turn right after the Water Park.
- Expo Center is the set of tall concrete buildings directly ahead. Park anywhere along the back fence or notify staff if you need assistance unloading.

2. Artists are required to bring a physical copy of any corresponding entry tags for artwork that is accepted into the show. Please check the email associated with your account for access to the entry tags.
3. Artists are responsible for the unloading and loading of artwork. If the artwork is of a size and bulk requiring special equipment for unloading, please contact the California Fine Art Coordinator prior to the drop-off date.
4. Pick-up all unsold, hand-delivered entries from Expo Center Building 7 only between the hours of **9:00 am** and **5:00 p.m.** on **Friday, August 7 and Saturday, August 8, 2026.** Must have claim check and a photo ID.
5. If someone other than the artist will be picking up an entry, they must bring a physical signed letter of authorization from the artist for the CA State Fair to keep on file. No exceptions.
6. **Artwork not picked up by artist will be donated or recycled after September 1, 2026.**

## Shipped Entries

1. Shipped accepted entries must arrive at the California State Fairgrounds no later than **Friday, May 29, 2026.**
2. Mail or ship **“Accepted”** entries to:  
California State Fair  
**California Fine Art Competition**  
Administration Building  
1600 Exposition Blvd.  
Sacramento, CA 95815
3. All shipped artworks must be sent prepaid and accompanied by our Shipping Form which requires information regarding return shipping. **Return shipping must be prepaid or include a shipping account via UPS or Fed Ex and include required paperwork with shipped artwork. No stamps will be accepted.**
4. Insurance is the responsibility of the artist.
5. The California State Fair reserves the right to return shipped entries by any carrier available. The Fair may, at its discretion, return entries via the original carrier.
6. Shipping containers must be reusable for return shipping purposes. The Fair will not provide any additional packing material. Please label all packing material with artist’s name (i.e., bubble-wrap, plastic wrap, etc.)

7. Artist must indicate on the **outside** of the shipping crate/package the **artist's name** and **the class** in which the artwork is entered.
8. Written instructions for unpacking and repacking must be included on the outside and/or inside of the container. If enclosed inside, instructions should be the first thing seen when the container is opened.
9. Enclosed documents such as assembly or display instructions, should be in an envelope and clearly marked as "documents" and labeled with their contents.
10. Shipped entries must be packed and crated securely. Framed two-dimensional artworks must have Plexiglass instead of glass if being shipped. Artists assume all responsibility for the condition of their entry and the quality of the shipping containers.
11. Shipped or mailed entries will be packed and mailed out by August 14, 2026.
12. Undeliverable shipped or mailed artworks returned to the California State Fair will be donated or recycled on or after September 1, 2026.



# JUDGING

There will be two rounds of judging.

## FIRST ROUND

First round is online, and entries will be juried from digital images for acceptance into the exhibition and invited to be delivered on May 29 - May 30, 2026. Results of this judging will be published on our website, [CAStateFair.com/fine-art/](https://CAStateFair.com/fine-art/). **If accepted, be sure to check the email associated with your account for entry tag(s) that must be printed and dropped off with the artwork.**

A list of accepted artworks arranged by Division and Class and listing the title the entry # or WEN# and artist's name will be posted to the Fine Art section on the Competitions page of our website. Results will be posted within five (5) working days after the judging. Results will not be given over the phone.

## SECOND ROUND

1. The **second round** of judging will be a closed to the public, onsite judging process where entries can be juried by the actual view. A confirmation judging and award distribution by jurors will be held at this time. Jurors may, at their discretion, **disqualify any artwork that does not meet the expectations set** by the entered **digital image(s)** or **the display requirements**.
  - . Reproductions, Giclee, or other prints of artworks entered as paintings will be disqualified. Artwork substituted in lieu of the entered artwork will be disqualified. Wet paintings will be disqualified.
  - . Only artworks accepted by the jury will be exhibited and will be eligible for awards. Approximately 180 artworks will be accepted. A list of accepted artworks in each Division and Class will be posted to our website, [CaStateFair.com/Competition](https://CAStateFair.com/Competition). Once artwork is accepted into the show, it may not be removed from the exhibition by the artist or purchaser until after the close of the California State Fair and the exhibition.
2. The results of confirmation judging will be published on our website, [CAStateFair.com/fine-art/](https://CAStateFair.com/fine-art/). The award won will be posted to the California Fine Art section on the Competitions page of our website. Results will be posted online on the opening day of the 2026 California State Fair

(July 17, 2026). Results will not be given over the phone.

3. The decisions of the jurors are final.

## **Jury**

Jurors are invited to participate on the basis of their qualifications. Preferred jurors are Museum Curators, University or College Art Professors, Gallery Directors, and/or artists recognized as experts in their field or medium. The 2026 jury will be announced on our website: [CaStateFair.com](http://CaStateFair.com).

Jurors are rotated on a regular basis to provide fresh viewpoints and maintain fairness in judging.

**To nominate a juror or inquire about becoming one, please send an artist resume and/or link to their portfolio or website to [fineart@caexpo.com](mailto:fineart@caexpo.com) for consideration.**

# AWARDS

**The California State Fair will award the following:**

## **BEST IN SHOW AWARD**

One of the Juror Awards will be chosen by a majority of the jurors as Best in Show.

Award ..... \$200 plus Golden Bear Award & State Fair Rosette

## **JUROR AWARD**

Six (6) Juror Awards will be selected.

Award (each)..... \$500 plus plaque & State Fair Rosette

## **AWARD OF EXCELLENCE**

A maximum of twenty-one (21) Award of Excellence may be awarded at the discretion of the jurors.

Award (each)..... \$200 and State Fair Rosette

## **AWARD OF MERIT**

A maximum of (100) Award of Merit may be awarded at the discretion of the jurors.

Award (each)..... \$50 and State Fair Rosette

## **SPECIAL AWARD**

Generous donors, organizations, individuals, and businesses may offer cash or merchandise awards to outstanding artworks in specific media or other categories as designated. Additional Special Awards may be added prior to the judging. Check our website [CaStateFair.com](http://CaStateFair.com) for updates.

**\*Award checks will be mailed out roughly one month after the close of the fair. Be sure to double-check your mailing address is correct and sufficient at time of entry.**

# DONOR AWARDS 2026

**Donors TBA, This section will be updated as more Donors sign up.**

**See below for 2025 Donors.**



Lucid Winery is an organic winery, tasting room and events center owned by award winning winemaker, Kevin Luther. We are glad to donate wine to the cause!



Design With Fire is a working art glass studio in West Sacramento. We are dedicated to the creation and education of art and craft, specializing in glass. We offer classes, workshops, studio rentals and consultation.

It was an honor to select these exceptional glass artists. Each artist created inspirational work in both fine arts and also in crafts. I am proud of our glass community here in California.

This section will be updated as more Donors sign up. To donate an award (voucher, equipment, gift card, etc.) to the California State Fair Fine Art and Plein Air Programs, please fill out the Donor Agreement on our webpage ([CAStateFair.com/fine-art/](https://CAStateFair.com/fine-art/)) and email us at [fineart@calexpo.com](mailto:fineart@calexpo.com). Donors get recognition in our book and on our webpage. To be included for 2026, please sign up by June 19, 2026.

# SPONSORS 2026

To become a sponsor and donate funds to the production of the California State Fair Fine Art and Plein Air Programs, please email us at [fineart@calexpo.com](mailto:fineart@calexpo.com).

# DIVISIONS & CLASSES

**Entry Fee: \$20.00 per entry.**

## **Division 400 - 2D Artworks/Brushworks**

Class 1 - Oil Paintings

Class 2 - Acrylic Paintings

Class 3 - Watercolors

Class 4 - Plein Air Paintings

Class 5 - Mixed Media Paintings

Notes & Special Rules for Division 400:

- a. Entries in this division should not exceed 4" in depth.
- b. Class 3 includes brushed ink artworks.
- c. Entries in Class 4 can be in any media but must have been 90% completed in plein air.

## **Division 405 - 2D Artworks/NonPainting**

Class 1 - Drawing

Class 2 - Pastels

Class 3 - Color Pencil

Class 4 - Printmaking

Class 5 - Collage

Class 6 - Mixed Media 2D

Notes & Special Rules for Division 405:

- a. Entries in this division should not exceed 4" in depth.
- b. Class 2 includes soft pastels and oil pastels.
- c. Entries in Class 4 must be prints made from artist's hand-made or manipulated plate, stone, or screen and be signed and numbered as a limited edition.
- d. Entries in Class 6 must incorporate two or more mediums.

## **Division 410 - 3-D Artworks**

Class 1 - Sculpture, Single Medium

Class 2 - Sculpture, Mixed Media

Class 3 - Assemblage

Class 4 - Recycle

Class 5 - Other 3D Artworks

Notes and Special Rules for Division 410:

- a. Artworks primarily composed of a single material are considered to be

“single medium” unless additional material constitutes more than an accent or embellishment.

- b. Entries in Class 4 must be 85% recycled materials.
- c. Sets shall be considered as one entry.
- d. Entries in Class 5 include, but are not limited to, bas-relief carving, fiber art, ceramics, glass, textiles.

## Division 415 - Digital Artwork

Class 1 - Digital Art

Notes & Special Rules for Division 415:

- a. If accepted, artworks in Class 1 must be displayed as prints or other physical depiction of the artwork and are subject to the rules for the display of 2-dimensional artworks. Artwork must be framed unless printed on “gallery wrapped” canvas or on metal.
- b. Digital Photography that has not been profoundly altered using software should be entered in the Photography Competition. This division is for artworks created entirely using computer hardware and software, or for digital photographs or scanned images that have been profoundly manipulated and/or combined using computer software.
- c. Entries must be original artworks created by the artist entering the competition and **cannot** include any element created or significantly altered using Artificial Intelligence (AI).

## Division 416: Porcelain Painting

Class 1 - Flat Surface

Class 2 - Vessel

Class 3 - Other Painted Item

Notes and Special Rules for Division 416:

- a. Class 1: Includes, but is not limited to tiles, plates, etc.
- b. Class 2: Includes, but is not limited to vases, cups, bowls, etc.
- c. Class 3: Includes, but is not limited to porcelain dolls, etc.

## Division 420 - Skateboard Artwork

Class 1 - Skateboard Art

Notes & Special Rules for Division 420:

- a. California has a rich history of skateboarding culture, and this division aims to celebrate that legacy. All mediums are welcome, including painting, graphic design, pyrography, laser printing, collages, and more.

- b. Diptychs and triptychs are allowed for this division.
- c. Boards must be appropriate for general audiences.
- d. Trucks/wheels must be removed from boards.

**Classes and/or divisions with no entries will be eliminated. Classes and/or divisions with few entries are at risk of being eliminated for the following year.**



# PLEIN AIR

## Division 460 - Special Contest: Plein Air

Class 1: Adult

Class 2: Young Adult

Notes & Special Rules for Division 460:

- a. Class 1- California residents who have reached 18 years of age as of January 1, 2026.
- b. Class 2 - California residents who have reached 13 years of age as of January 1, 2026 and who have not reached 18 years of age as of January 1, 2026.

**Entry Deadline: Friday, July 10, 2026**

**Entry Fee - \$10** per painting entered (maximum of three)

**Paint-out days - Saturday, July 18 and Sunday, July 19, 2026**

We will provide one California State Fair admission credential per contestant for **each paint-out day** per exhibitor in Class 1. Additionally 2 admission credentials will be given per contestant for **each paint-out day** per exhibitor in Class 2. Parking is not included.

### AWARDS:

1st Place .....	\$125 and ribbon
2nd Place.....	\$75 and ribbon
3rd Place.....	\$50 and ribbon

Any additional awards or merchandise gift certificates donated by businesses or associations will be announced. Ribbons will be presented immediately after the judging is finalized.

Premium checks will be mailed roughly one month after the close of the fair.

### Rules

1. Participants in the contest must register online and pay entry fee with visa or master card for one, two or three paintings by 11:59 pm, Friday, July 10, 2026. No late registration will be allowed.
2. Participants will receive an e-mail notification that their registration has been processed. The email will also contain any updated information about entering the fairgrounds to check in.

3. **CHECK IN:** Participants must come to the Expo Center Building #7 between the hours of 8:00 am and 10:00 am on Saturday, July 18 or Sunday, July 19, 2026, to check in and have their painting surface certified with date and time. See directions and map on page 17.
4. Participant must present to the Fine Arts program staff a blank painting surface (canvas, panel, board, or paper) for each entry. The back of the painting surface will be marked by the staff or volunteers with a code to assure that all paintings in the exhibit are done in their entirety on the official paint-out days. Canvas, panel, board or paper that is not 100% blank will not be certified. **Only one canvas per paid entry fee will be authorized and signed off by staff. No additional canvases will be allowed.**
5. **Size limitation:** Finished (unframed) size may not exceed 18" x 24".
6. Admission credentials for paint out days will be left at the Box Office at the Main Gate Loop with the participants' names. Participants will be issued credentials as outlined on the previous page.
7. Paintings must be completed and turned in on the same day they are painted at the fairgrounds. Completed paintings are to be turned in at the California Fine Art exhibit building, Building 7, Expo Center, between the hours of 10:00 am and 9:00 pm on Saturday, July 18, 2026, and between the hours of 10:00 am and 4:00 pm on Sunday, July 19, 2026. Only paintings with the certification code for that day on the back will be accepted into the exhibit; all others will be disqualified.
8. Completed paintings that are turned in may be offered for sale. When turning in paintings, participants will be asked to fill out paperwork with the painting's Title, medium, and sale price.
9. **SALES:** Participants may not offer their artwork for sale except in the Plein Air Special Exhibit in Expo Center Building 7. The CA State Fair Staff or volunteers will conduct sale transactions and payment to the artist will be delivered by mail to the artist after the close of the fair. For more details, please refer to "Art Sales Information" on page 16.
10. Insurance is the responsibility of the participant. Participants are responsible for their tools, materials, supplies, and other personal property. Exhibits are not insured.

## Judging

The Plein Air at the Fair Special Contest will be judged by an independent expert at 6:00 p.m. on Sunday, July 19, 2026. Paintings that have not been turned in by the 4:00 pm deadline will not be judged. The decision of the judge is final. Winners will be announced and awards distributed immediately after the judging results are validated. A report of the winning paintings will be posted to the California State Fair website [CaStateFair.com](http://CaStateFair.com) as soon as possible.

## To Enter the Special Contest

Enter online prior to 11:59 pm, Friday, July 10, 2026. When entering, use “TBD1”, “TBD2”, “TBD3” as the titles. Actual titles, medium, and sale price will be recorded when the paintings are turned in.



# 2026 GENERAL RULES

CLICK LINK OR SCAN QR CODE TO VIEW GENERAL RULES ONLINE:

<https://castatefair.com/wp-content/uploads/2025/11/2026-General-Rules.pdf>

